

Earthworms

our partners for resilient, living soil in the mountains

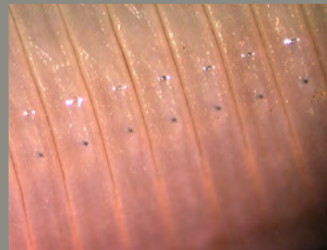
Identification sheets



Jean-Jacques Brun, Sébastien De Danieli

Identification sheets

- *Lumbricus terrestris*
- *Aporrectodea nocturna*
- *Aporrectodea chlorotica*
- *Dendrobaena octaedra*
- *Octodrilus juvyi*
- *Aporrectodea rosea*
- *Octolasion cyaneum*
- *Aporrectodea longa*
- *Eisenia fetida*
- *Lumbricus rubellus*



Lumbricus terrestris

Identity card

Colour: reddish purple pigmentation

Length: 130 to 250 mm

Width: 7 to 9 mm

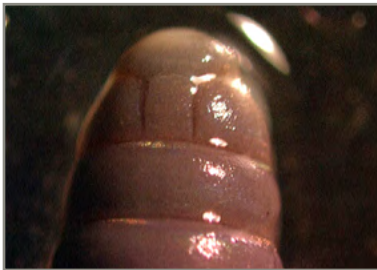
Weight: 5 to 15 g

Habitat: deciduous forests, pastures and crops

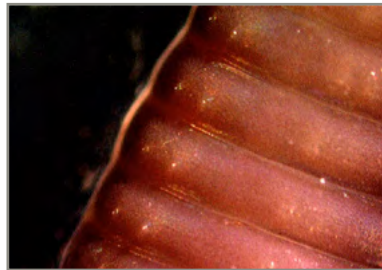
Ecological category: epi-anecic



Morphological characteristics



Tanylobic prostomium



Paired bristles



Clitellum on segments 32 to 37

Ecological characteristics

The species is relatively frequent and spread throughout the country. It is relatively unaffected by the topography of the land and plays a key role in the transfer of materials in the top soil horizons. It is found in a diverse range of environments from pastures and low-intensity crops to mountain forests.

Aporrectodea nocturna

Identity card

Colour: brownish-black iridescent pigmentation

Length: 90 to 180 mm

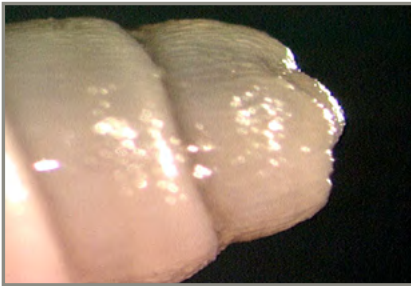
Width: 4 to 5 mm

Weight: 1.9 to 3 g

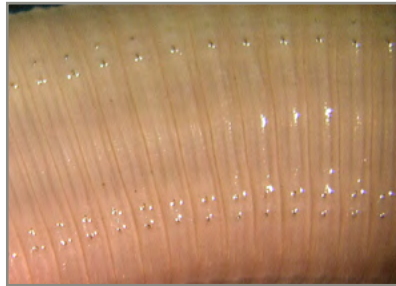
Habitat: deciduous forests, pastures and crops

Ecological category: anecic

Morphological characteristics



Episodic prostomium



Paired bristles



Clitellum on segments 28 to 34

© B. Juvy

Ecological characteristics

The species is fairly polymorphous and likes environments with low levels of organic material. Fairly characteristic of healthy soil, this anecic species is relatively frequent in good numbers in natural environments and is fairly unaffected by land topography. It plays a particularly important role in ecosystems due to its marked excavating behaviour.

Aporrectodea chlorotica

Identity card

Colour: greenish-brown pigmentation

Length: 50 to 80 mm

Width: 3 to 7 mm

Weight: 500 to 700 mg

Habitat: forests and environments with low levels of organic material

Ecological category: endogeic

Morphological characteristics



Epilobic prostomium



Paired bristles



Clitellum on segments 29 to 37

© B. Juvy

Ecological characteristics

The species is neutrophilic and relatively unaffected by the topography of the land. It can be found in particular in rather damp areas with low levels of organic material.

Dendrobaena octaedra

Identity card

Colour: reddish-purple iridescent pigmentation

Length: 30 to 60 mm

Width: 1 to 2.5 mm

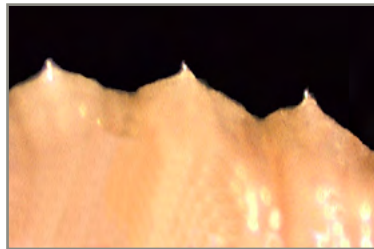
Weight: 80 to 100 mg

Habitat: mixed forests at high altitude. Very resistant to the cold

Ecological category: epigeic



Epilobic prostomium



Unpaired bristles



Clitellum on segments 29 - l/n 34

© B. Juvy

Ecological characteristics

The species is riparian, relatively unaffected by the topography of the land and found rather in forests. Surface taxon, found in particular in environments with moderate organic material.

Octodrilus juvyi

Identity card

Colour: red-brown pigmentation

Length: 30 to 60 mm

Width: 1 to 3 mm

Weight: 80 to 100 mg

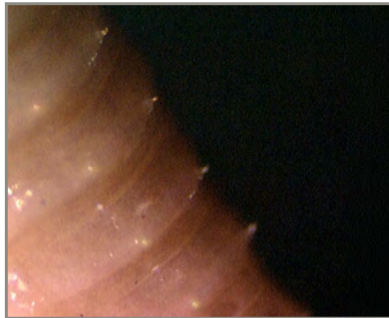
Habitat: mixed forests at high altitude and screes

Ecological category: epigeic

Morphological characteristics



Epilobic prostomium



Largely paired bristles



Clitellum on segments 29 to 35

© B. Juvy

Ecological characteristics

The species was discovered in 2006 by Bernard Juvy (Cemagref) in the Chartreuse mountain range. This riparian species is found in the superficial structures of scree areas and rather cool forest sites at high altitude.

Aporrectodea rosea

Identity card

Colour: pinkish pigmentation

Length: 40 to 70 mm

Width: 2 to 3 mm

Weight: 150 to 280 mg

Habitat: forests and pastures

Ecological category: endogeic

Morphological characteristics



Epilobic prostomium



Paired bristles



Clitellum on segments 26 to 32

© B. Juvy

Ecological characteristics

The species is distributed over a vast area in Europe. It is relatively unaffected by the topography of the land. The species is found in many forest and pasture ecosystems.

Octolasion cyaneum

Identity card

Colour: no skin pigmentation

Length: 80 to 140 mm

Width: 6 to 8 mm

Weight: 1500 to 2500 mg

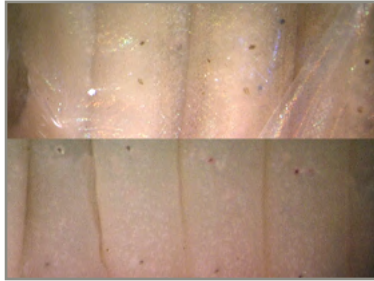
Habitat: cool mountain regions

Ecological category: epi-endogeic

Morphological characteristics



Epilobic prostomium



Unpaired bristles behind the clitellum only



Clitellum on segments 26 to 32

© B. Juvy

Ecological characteristics

The species is frequent and typical of wet, healthy soil with little organic material. The separate implantation of the bristles and its lack of pigmentation are characteristic features of the species which facilitate its identification.

Aporrectodea longa

Identity card

Colour: grey-black iridescent pigmentation

Length: 130 to 170 mm

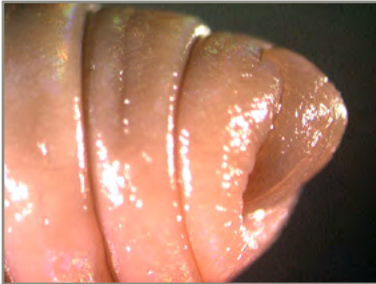
Width: 6 to 8 mm

Weight: 1200 to 3800 mg

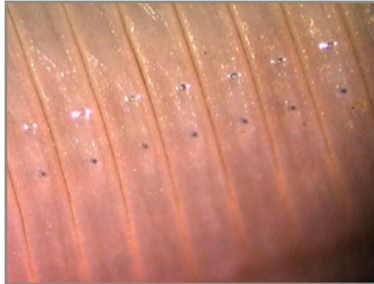
Habitat: widely present in different environments

Ecological category: anecic

Morphological characteristics



Epilobic prostomium



Paired bristles



Clitellum on segments 28 to 35

© B. Juvy

Ecological characteristics

The species is very frequent in many environments and is relatively unaffected by the topography of the land. It plays an important role in the transfer of matter in the different soil horizons.

Eisenia fetida

Identity card

Colour: striped reddish-purple pigmentation

Length: 50 to 120 mm

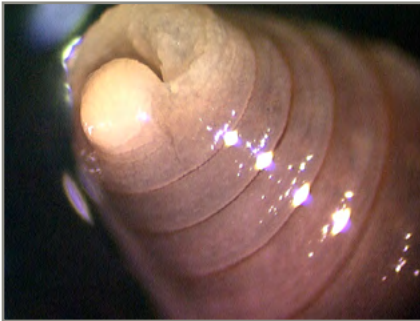
Width: 2 to 4 mm

Weight: 200 to 600 mg

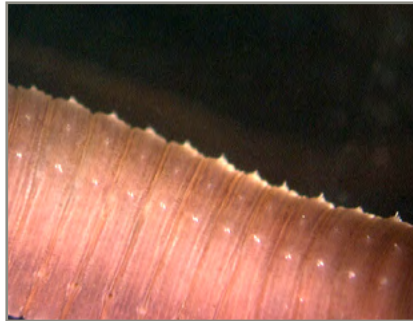
Habitat: compost, manure

Ecological category: epigeic

Morphological characteristics



Epilobic prostomium



Paired bristles



Clitellum on segments 26 to 32

© B. Juvy

Ecological characteristics

The species is fairly rare in the natural environment. It is found rather in compost and other organic waste. However, it can sometimes be spotted between the bark and sapwood of dead trees.

Lumbricus rubellus

Identity card

Colour: dark red pigmentation

Length: 60 to 130 mm

Width: 2 to 2.5 mm

Weight: 450 to 2500 mg

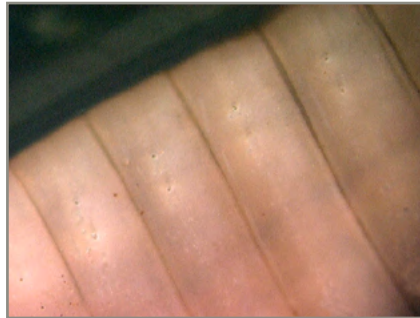
Habitat: wooded environments

Ecological category: epigeic

Morphological characteristics



Epilobic prostomium



Paired bristles



Clitellum on segments 26 to 32

© B. Juvy

Ecological characteristics

The species is relatively unaffected by the topography of the land and is well-represented in healthy wooded environments. This hygrophilous species can usually be found in fairly organic environments.